



GOOD MORNING

Have Good Trading Day

WEDNESDAY



Price is what you pay.
Value is what you get.

- Warren Buffet

MARKET PLUSE

INDIAN INDICES

NAME	CMP	NET CH.	%
SENSEX	27253	-108	-0.40
NIFTY	8232	-27	-0.33

INDIAN ADR'S

SYMBOL	CLOSE	GAIN/ LOSS %
DRREDDY	65.27	-0.46
HDFCBANK	63.79	+0.36
ICICIBK	8.95	-1.32
INFY	18.50	Unch
TATAMOTOR	29.14	-1.15
WIPRO	12.31	-0.32

FII AND MF ACTIVITY

SYMBOL	In Crs.
FIIs Eq (Provisional)	9.50
FIIs Index Future	624.28
FIIs Index Options	-1087.42
FIIs Stock Future	-645.00
FIIs Stock Options	62.47
DII's Eq (Provisional)	-165.45

CURRENCY

RBI RATE	27-OCT-2015
RUPEE - \$	64.9553
EURO	71.8406
YEN 100	53.8300
GBP	99.7324

MARKET PLUSE

GLOBAL INDICES

NAME	CMP	NET CH.	%
DOW	17581	-41	-0.24
NASDAQ	5030	-4	-0.09
NIKKEI	18890	+113	+0.60
HANG SENG	23007	-135	-0.59
SGX NIFTY	8230	-14	-0.17

WORLD COMMODITIES

FUTURE	U\$\$	CHANGES
CRUDE	43.26	+0.06
NATURAL GAS	2.370	+0.010
GOLD	1168.2	+2.4
SILVER	15.910	+0.047
COPPER	2.3555	-0.0065

WORLD EVENTS

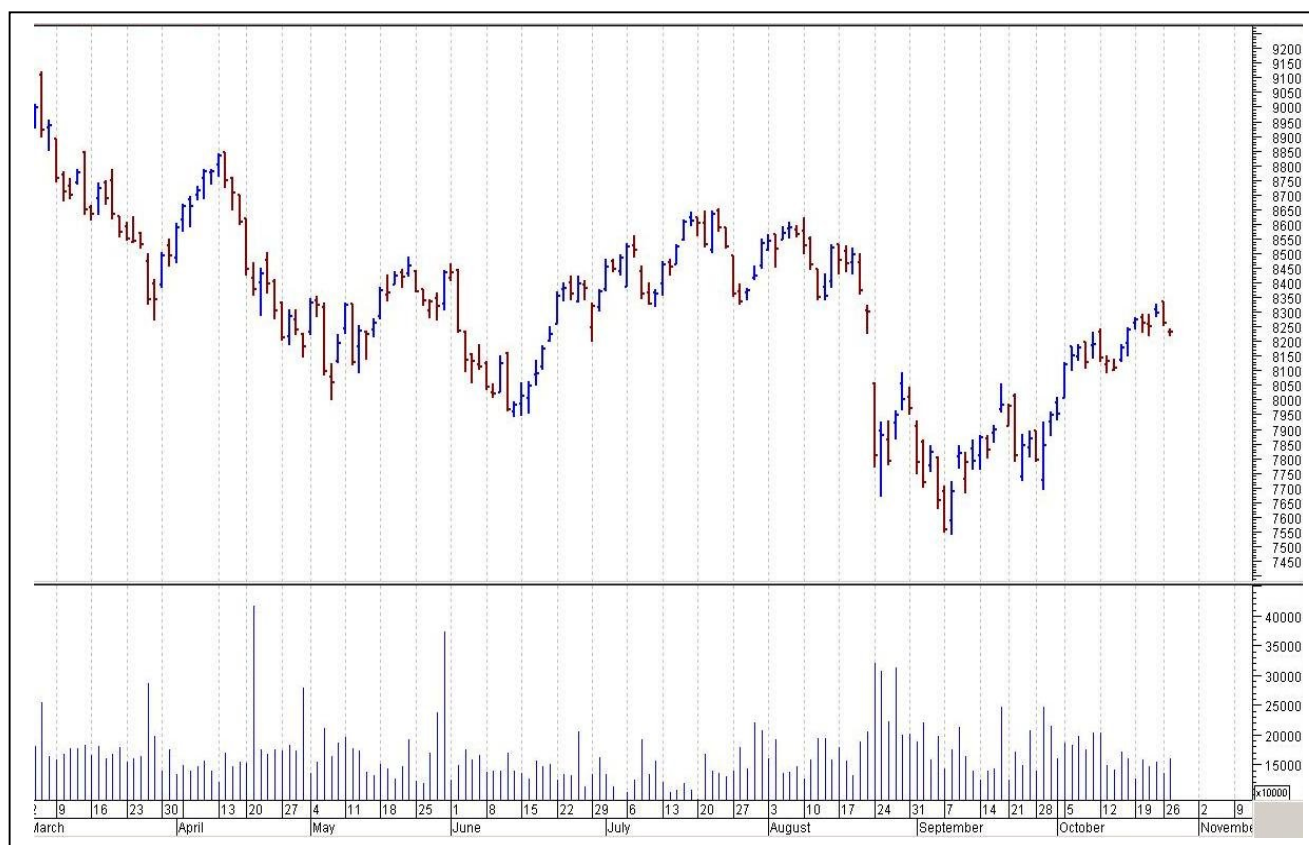
- US: FOMC Statement
- Federal Funds Rate
- UK:NIL

TOP STORY

- ABG, Pipavav and L&T await Ministry of Defence call on `20,000 cr warship deal (ET)
- Thermax Q2 Net Profit Down 24.7% At `64.8 Cr (YoY). Total Income Down 8.7% At ` 1,056.5 Cr (YoY)
- Tata Communications Q2 Cons Net Profit At `6 Cr Vs Loss Of `33.9 Cr (QoQ) Cons Total Income Down 1% At `5,154.3 Cr (QoQ)
- CEAT Q2 Cons Net Profit Up 30.5% At `107.4 Cr Vs `82.3 Cr (YoY) Cons Total Income Down 2% At `1,409.4 Cr Vs `1,437.8 Cr (YoY)
- Opto Circuits US arm files for bankruptcy to facilitate debt restructuring
- Siemens arm leases 3.5 lk sq ft at Cummin India Campus in Pune for over `25 cr annual rent (ET)
- Mastek Bags Multi-year Contract From National Credit Guarantee Trustee Co
- Deepak Nitrite Bags Annual Contract To Supply An Agro Intermediate To Bayer Crop



NIFTY CHART



MARKET COMMENTARY

Tuesday's trading session turned out to be a disappointing for the Indian equity markets which got pounded by one third of a percent amid weak global cues. Traders remained wary ahead of October series expiry in the derivatives segment on Thursday and Fed policy meet. After a negative opening, the domestic bourses never looked in recovery mood and extended the northward journey for second day in a row, breaching their crucial support levels of 27,300 (Sensex) and 8,250 (Nifty). Sentiments remained down-beat on report that foreign institutional investors (FIIs) have reduced their holdings in 19 blue chip firms that are part of the 30-share benchmark Sensex during July-September quarter as they recast their portfolio on account of several domestic and global factors. For today's trade Nifty likely to trade in the range between 8260 - 8290 in the upper side and 8210 - 8160 in the lower side.

MARKET LEVELS

	CMP	SUPPORT LEVELS				RESISTANCE LEVELS			
NIFTY	8232	8210	8160	8140	8110	8260	8290	8310	8340
USDINR	64.97	64.91	64.87	64.8	64.6	65.05	65.1	65.15	65.25



FUTURES CORNER

SCRIPS	CLOSE	SUPPORT	TARGET		REMARKS
		STOP LOSS	T1	T2	
MARUTI	4502.9	4488	4528	4548	TRADING CALL
MARICO	392.4	388	398	408	TRADING CALL
ASIANPAINTS	825.5	818	838	848	TRADING CALL

EQUITY CORNER

SCRIPS	CLOSE	SUPPORT	TARGET		REMARKS
		STOP LOSS	T1	T2	
AXISCADES	299.65	296	311	318	TRADING CALL
HCL-INSYS	57.9	57	60	61.8	TRADING CALL

DELIVERY BASED CALL / INVESTMENT CALL

SCRIPS	CMP	SUPPORT	TARGET		REMARK
		STOP LOSS	T1	T2	

BULK DEALS (BSE)

SCRIP	CLIENT NAME	BUY/SELL	QUANTITY	PRICE
SKSMICRO	MORGAN STANLEY ASIA SINGAPORE PTE	B	777,000	402.44
SKSMICRO	WESTBRIDGE VENTURES II LLC	S	1,415,820	401.71

BULK DEALS (NSE)

SCRIP	CLIENT NAME	BUY/SELL	QUANTITY	PRICE
INDOCO	BARCLAYS MERCHANT BANK (SINGAPORE) LTD	BUY	2149206	336
INDOCO	BARING INDIA PRIVATE EQUITY FUND III LISTED INVESTMENTS LTD	SELL	2149206	336
SINTEX	BARCLAYS MERCHANT BANK (SINGAPORE) LTD	BUY	5377511	99

SCRIP'S IN F&O BAN

(To resume for normal trading below 80% of market wide limit required)

IBREALEST, CEATLTD



NIFTY 50 STOCKS: SUPPORT & RESISTANCE						
Symbol	Close	Support 1	Support 2	Pivot Point	Resistance1	Resistance2
ACC	1385.8	1377.9	1370.0	1388.0	1395.9	1405.90
ADANI PORTS	311.3	308.9	306.5	312.8	315.2	319.07
AMBUJACEM	205.4	203.0	200.6	206.5	208.9	212.40
ASIANPAINT	827.1	820.1	813.1	825.0	832.0	836.90
AXISBANK	521.8	515.5	509.1	522.0	528.3	534.83
BAJAJ-AUTO	2582.2	2559.8	2537.5	2577.4	2599.8	2617.35
BANKBARODA	168.4	166.6	164.8	169.7	171.5	174.62
BHARTIARTL	352.7	348.9	345.2	351.8	355.5	358.42
BHEL	214.4	211.9	209.5	215.8	218.3	222.17
BOSCHLTD	21624.4	21463.1	21301.9	21621.6	21782.8	21941.25
BPCL	914.7	901.4	888.2	909.2	922.4	930.22
CAIRN	157.9	156.1	154.2	158.0	159.9	161.83
CIPLA	684.7	675.3	665.9	681.7	691.1	697.40
COALINDIA	332.3	328.6	324.8	331.8	335.6	338.83
DRREDDY	4179.1	4152.7	4126.4	4188.9	4215.2	4251.37
GAIL	318.7	312.8	307.0	322.0	327.8	336.95
GRASIM	3686.5	3665.0	3643.5	3692.5	3714.0	3741.48
HCLTECH	867.7	856.8	846.0	865.4	876.2	884.82
HDFC	1275.1	1263.0	1250.8	1283.9	1296.1	1317.03
HDFCBANK	1110.9	1099.6	1088.4	1106.8	1118.1	1125.27
HEROMOTOCO	2620.1	2589.9	2559.6	2616.9	2647.2	2674.23
HINDALCO	84.4	83.0	81.7	84.6	85.9	87.47
HINDUNILVR	812.2	802.6	793.1	808.7	818.3	824.38
ICICIBANK	283.7	281.9	280.1	283.9	285.7	287.70
IDEA	141.0	139.4	137.9	141.3	142.9	144.77
INDUSINDBK	954.0	950.1	946.2	954.9	958.8	963.53
INFY	1149.4	1144.0	1138.6	1149.5	1154.9	1160.40
ITC	356.0	353.9	351.7	355.4	357.6	359.10
KOTAKBANK	660.5	656.5	652.6	661.3	665.2	669.95
LT	1494.8	1482.2	1469.7	1502.6	1515.1	1535.52
LUPIN	1945.7	1910.1	1874.6	1967.6	2003.1	2060.55
M&M	1250.1	1235.5	1220.9	1247.9	1262.5	1274.95
MARUTI	4497.0	4409.7	4322.5	4463.9	4551.1	4605.27
NTPC	132.7	131.4	130.2	132.3	133.6	134.48
ONGC	247.9	245.4	242.8	249.8	252.3	256.73
PNB	134.4	133.5	132.6	134.4	135.2	136.12
POWERGRID	133.9	132.8	131.7	134.5	135.6	137.33
RELIANCE	939.6	935.2	930.9	941.7	946.1	952.58
SBIN	248.8	247.2	245.6	249.7	251.3	253.80
SUNPHARMA	908.7	891.6	874.6	902.0	919.1	929.48
TATAMOTORS	383.4	381.4	379.4	384.2	386.1	388.92
TATAPOWER	71.0	70.4	69.8	70.9	71.5	72.08
TATASTEEL	246.0	243.2	240.5	246.8	249.5	253.02
TCS	2531.1	2519.3	2507.6	2532.1	2543.9	2556.67
TECHM	538.8	535.2	531.6	539.7	543.3	547.87
ULTRACEMCO	2909.7	2858.6	2807.5	2887.3	2938.4	2967.05
VEDL	104.8	102.4	100.1	104.5	106.8	108.87
WIPRO	575.1	568.3	561.4	572.8	579.7	584.23
YESBANK	751.3	743.4	735.6	749.9	757.7	764.17
ZEEL	424.8	421.2	417.6	424.8	428.4	431.90



CORPORATE ACTION / BOARD MEETINGS

NSE Download Ref.No.:NSE/CML/30981:- Face Value Split - Sarla Performance Fibers Limited (SARLAPOLY) from Rs.10 to Rs.1 w.e.f October 29, 2015

BOARD MEETINGS

COMPANY NAME	DATE	PURPOSE	RS. PER SH.
ASIANPAINT	28-Oct-15	Dividend	2.2
SARLAPOLY	29-Oct-15	Face Value Split From Rs 10 To Re 1	
CAPLIPOINT	29-Oct-15	Annual General Meeting/Dividend	5
KITEX	29-Oct-15	Dividend	0.75
FOSECOIND	29-Oct-15	Dividend	
GODREJCP	30-Oct-15	Dividend	
WELSPUNIND	30-Oct-15	Dividend	6.5
SSWL	30-Oct-15	Dividend	
TRIDENT	2-Nov-15	Dividend	
SUNTV	2-Nov-15	Dividend	
TIRUMALCHM	3-Nov-15	Dividend	
COLPAL	5-Nov-15	Dividend	
SHREECEM	5-Nov-15	Annual General Meeting/Dividend	14
SRTRANSFIN	5-Nov-15	Dividend	
DABUR	5-Nov-15	Dividend	
MAYURUNIQ	9-Nov-15	Dividend	
ZYLOG	9-Nov-15	Dividend	
HCL-INSYS	10-Nov-15	Dividend	
PAGEIND	16-Nov-15	Dividend	

NEWS & RUMOURS:

- Gold (Spot Dollar) major support = \$1132/\$1114 & Resistance = \$1195/\$1222.
- Crude oil range->\$38 to \$48.
- Energy Prices Retreat with Global Stocks Ahead of Fed Meeting: - Declines in oil and natural gas rippled through world markets, weighing on equities and the currencies of commodity-producing nations as the Federal Reserve begins a two-day meeting amid fresh jitters over the strength of the global economy and the threat of deflation.
- Stock Exchanges Are Fighting a Global War for Listings: - The New York Stock Exchange is going global -- and in a big way. In a trend that's swept stock markets around the world, exchanges like the Big Board are stepping up efforts to attract more foreign companies looking to go public. In just two years, the number of cross-border IPOs on the biggest venues has more than doubled, according to data compiled by Bloomberg.
- Yen Strength Returns as Central Bank Meetings Spur Risk Aversion: - The yen strengthened as investors opted for its relative safety before the Federal Reserve and the Bank of Japan announce monetary policy decisions in coming days.
- Oil prices fall as glut worries worsen: - Oil prices fell on Tuesday, extending losses into a third week, on worries over a supply glut and with U.S. inventory data expected to show another increase in crude stocks.
- U.S. natural gas futures crash to 3-year low on weather outlook: - U.S. natural gas futures crashed to a more than three year low on Tuesday, as demand for the fuel was likely to remain limited after meteorologists predicted warmer-than-normal temperatures in much of the U.S. in the weeks ahead.

TRENDS & OUTLOOK – DATE: 28- Oct- 2015

PRECIOUS METALS:

COMMDITY (MCX)	S2	S1	PIVOT POINT	R1	R2
GOLD (Dec)	26370	26627	26870	27222	27420
SILVER (Dec)	34800	36000	37000	38100	39400

BASE METALS

COMMDITY (MCX)	S2	S1	PIVOT POINT	R1	R2
COPPER (Nov)	333	337	342	348	354
ZINC (Oct)	108.30	110.10	112.50	115.45	118.60
LEAD (Oct)	108.30	110.70	113.20	115.20	117.30
NICKEL (Oct)	648	662	681	699	716

ENERGY

COMMDITY (MCX)	S2	S1	PIVOT POINT	R1	R2
CRUDE OIL (Nov)	2610	2730	2830	2934	3048
NATURAL GAS (Nov)	142	148	154	163	168

DATE TALKS : TODAY'S ECONOMIC DATA :

Goods Trade Balance, Crude Oil Inventories, FOMC Statement, Federal Funds Rate.



Registered Office

Indira House, 3rd Floor, 5 Topiwala Lane,
Opp. Lemington Road Police Station, Grant Road (East), Mumbai - 400007.

Corporate Office

'Ramavat House' E-15, Saket Nagar, Indore - 452018 (M.P.)

Customer Care

Tel: +91-731-4097170/ 71/ 72/ 73/ 74 M. +91 93031 72345

Email: customercare@indiratrade.com www.indiratrade.com



INSTITUTIONAL DEALING UNIT

Africa House, 5, Topiwalla Lane, Lamington Road, Mumbai, 400007

Tel: +91 22 30080678 Fax : +91 22 23870767 Email : ie@indiratrade.com

Disclaimer

This report is for private circulation within the Indira Group. This report is strictly confidential and for information of the selected recipient only and may not be altered in any way, transmitted to, copied or distributed, in part or in whole, to any other person or to the media or reproduced in any form. This report should not be construed as an offer or solicitation to buy or sell any securities or any interest in securities. It does not constitute a personal recommendation or take into account the particular investment objectives, financial situations, or any such factor. The information, opinions estimates and forecasts contained here have been obtained from, or are based upon, sources we believe to be reliable, but no representation of warranty, express or implied, is made by us to their accuracy or completeness. Opinions expressed are our current opinions as of the date appearing on this material only and are subject to change without notice.